

**DON'T LOOK BACK—BUT LOOK FORWARD TO THE “FORWARD STATE” OF
WISCONSIN—AND JOIN US AT SUPREME SESSION
IN MADISON, WISCONSIN
JULY 27, 2008-AUGUST 3, 2008**

Transportation to Wisconsin: Leave Harrisburg Airport on July 27, 2008 and return Aug. 3, 2008



Rooming Accommodations:

Comfort Suites, Madison West
1253 John Q. Hammons Dr
Madison, WI 53717
PH: 608-836-3033
Includes Complimentary Continental Hot Breakfast Buffet
In room refrigerators, microwaves and coffee makers.
Located next door to the convention headquarters.
Indoor pool and Fitness center, Game room



Transportation to activities: Rented van

Estimated cost for trip *without activities or meals* (includes airfare, room with 4 per room and van transportation to activities) is approximately \$750.00. Price will be finalized when air reservations are made.

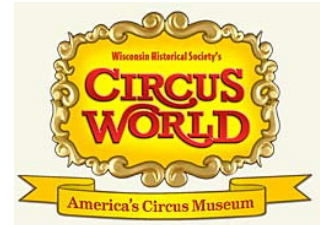


Deposit: \$100.00 deposit is required by February 15, 2008. (Airfare will not be refundable)

Proposed activities not included in the price above. Exact activities and schedule will be provided.

Circus World: Home of the Ringling Bros. Circus. See the exhibits, ride an elephant or camel, take part in the KidsWorld Circus, watch the Circus Variety Show and the Acrobats of Circus China

Cost for group of 20+ \$12.00 per person



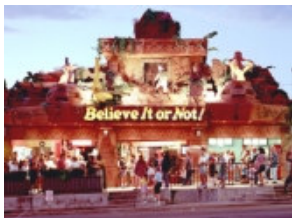
Cave of the Mounds: Explore the cave and mine for gemstones

Cost: Ages 4-12 \$7.50
Ages 13+ \$15.00



Wisconsin Dells:

Wizard Quest: This is an interactive computer game in a 13,000 square foot fantasy, themed labyrinth. Take part in the game. Your goal is to locate and release the imprisoned wizards. Check out the website at www.wizardquest.net. Cost: \$13.00 per person



Ripley's Believe It or Not \$12.00 per person

Dells 4D Special FX Theatre \$10.00 per person

Other Activities that are located in Madison/Middleton, WI:

Bogey's Family Fun Park
Mini golf \$4.50 group rate (10 or more)
Go Kart \$3.75 each (group rate 10 or more)
Dane County Farmer's Market (outside the Capital Building) on Saturday mornings
Free orchestra concert Wednesday evenings on the Square in front building.
Day at the Beach
Shopping at the Greenway Station Mall located within walking distance of the hotel.



of the Capitol

SUPREME TRIP TO WISCONSIN July 27-Aug 3, 2008

Yes, I want to travel to Wisconsin with the PA Job's Daughters Group for the Supreme Sessions.

Name _____ Bethel # _____

Address _____

Phone _____ E-mail _____

Enclosed is my non-refundable deposit of \$100.00. This deposit will be applied to the airline ticket. Due by February 15, 2008

If you are planning on attending, you must send this form to the address below by Feb 15, 2008. Once the airline tickets are purchased, we will not be able to include you in the group arrangements.

The next installment will be due when the ticket price is determined for the airfare. Airfare will be non-refundable and will be due immediately upon notification.

Mail to: Linda Bates, VGG
PO Box 650
Dillsburg, PA 17019

Questions may be e-mailed to: pagg0809@yahoo.com or call me at 717-432-4628.

You will receive further information once your initial deposit is received and the information becomes available.